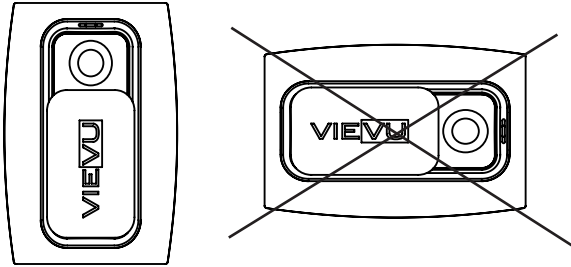


WEARING THE VIEWU CAMERA

Use a phillips head screwdriver to attach your VIEWU camera to one of the two supplied attachment clips. To change clip orientation, you MUST loosen the screw. Do not force or you could break the clip.

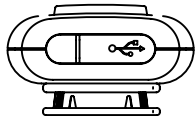
The human body naturally angles upward in the upper chest area. Most people will have to wear the camera lower on their torso than they first realize. Take some time to experiment with placement on your body.

Ensure that the camera is upright so the video will record in the proper orientation.



RESET BUTTON

If your camera fails to respond, it may need to be reset. The reset button is a small round hole under the USB cover. Gently insert the end of a paperclip into the hole while the unit is turned on and press to reset.



LIMITED WARRANTY

Product Warranty. Company warrants to purchaser that the Products purchased here under shall be free from defects in materials and workmanship and shall conform in all material respect to the specifications for a period of ninety (90) days from the date of delivery thereof, provided the Product in question has been stored and used in accordance with ordinary industry practices and conditions. Company does not warrant that the operation of the products will be uninterrupted or error free.

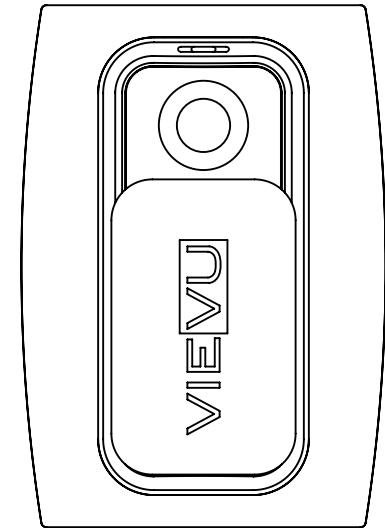
Remedies. In the event that a Product does not comply with the product warranty set out above and such non-conforming Product is returned to Company within the warranty period by Purchaser freight prepaid, Company will repair or replace such non-conforming Product at no additional charge to Purchaser; the repaired or replaced Product will be returned to Purchaser, freight prepaid.

Disclaimer of Warranties. The foregoing express warranties are limited to company and are not transferable and are in lieu of any other warranty by Company with respect to Products furnished hereunder. Company grants no other warranty, either express or implied, including without limitation, warranties or merchantability or fitness for a particular purpose.

Limitation of Liability. Company shall in no event be liable for any indirect, incidental, special or consequential damages arising out of or relating to the sale or use of its products, whether or not company has advance notice of the possibility of such damages. If company breaches any provision of this agreement, purchaser's sole and exclusive maximum liability, whether based in contract, tort or otherwise, shall not in any event exceed the contract price for the particular products.

VIEWU
105 W. John St.
Seattle WA 98119
1.888.285.4548
www.viewu.com

VIEWU®

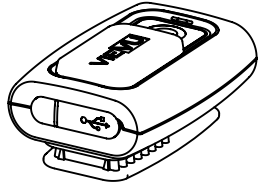


QUICK START GUIDE

No Veripatrol Software

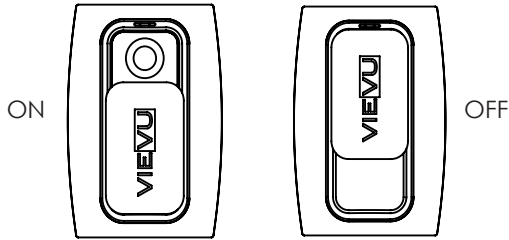
CHARGING YOUR VIEVU

Before you start recording, it is important to fully charge the battery. You can use the included wall charger or plug your camera into your computer. Maximum charge time is approximately 3 hours.



RECORDING

To record, slide the on/off switch on the front of the camera. The on/off switch also doubles as a lens cover when in the "off" position.

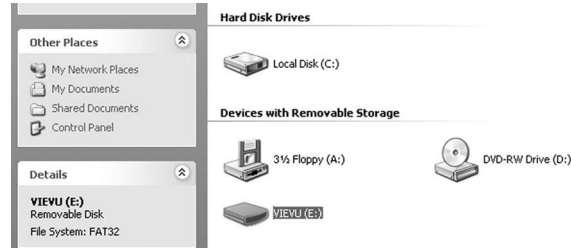


INDICATOR LIGHT

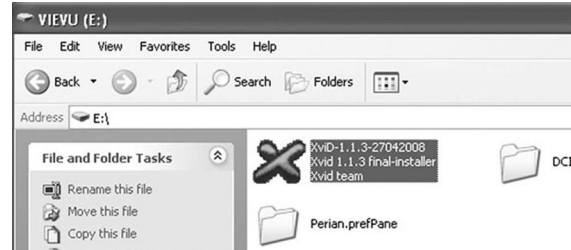
- Red Light** The camera is charging. When the red light turns off, the camera is fully charged.
 - Amber Light** The camera is connected to power and turned on.
 - Blinking Red Light** The camera has a low battery or the memory is almost full.
 - Blinking Green Light** The camera is recording.
- The LED light will turn from blinking green to blinking red during recording when available memory OR battery capacity is 20% or less.

VIEWING YOUR VIDEOS - WINDOWS COMPUTER

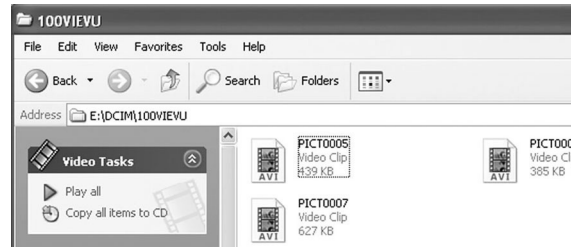
Connect the camera to a computer and turn it on. Click "Start", "My Computer", and then double click "VIEVU".



Double click "XviD-1.1.3-27042008.exe" to install the codec.



To play a video, double click "DCIM", "VIEVU100", and then simply double click a video. To copy a video, drag and drop the video to your desired storage location.



VIEWING YOUR VIDEOS - MAC COMPUTER

Connect the camera to a computer and turn it on. Select "VIEVU" in the left column of the Finder. Double click on "Perian.prefPane" to install the codec.



To view a video, click on the "Finder", select "VIEVU", then "DCIM", and then "VIEVU100". To play a video, simply double click it. To copy a video, drag and drop the video to your desired storage location.

